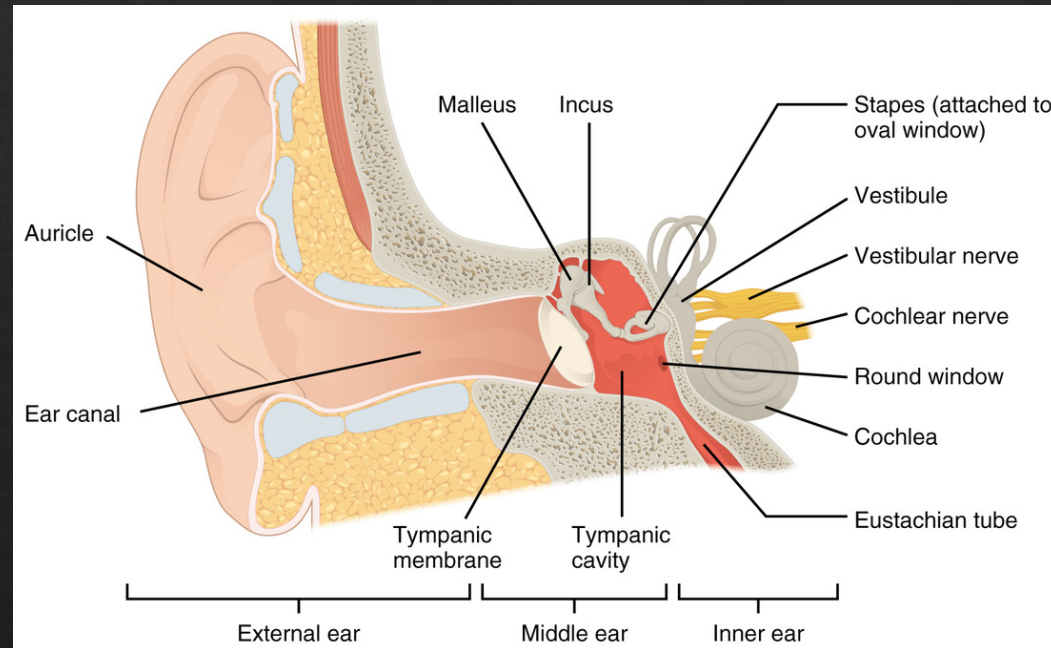


Main functions:

- ◇ It's the organ of hearing which detects and analyzes sound by the conversion of electrochemical impulses.
- ◇ It has a main role in equilibrium by the maintain of the sense of balance.
- ◇ It also contributes to the coordination between head and eyes.

Structure:

- ◇ The outer ear.
- ◇ The middle ear.
- ◇ The inner ear.



Isophonic curves:

◇ Fletcher-Munson Curves



Hear diseases:



- ◆ Deafness.
- ◆ Hearing loss is caused by a disfunction of the inner ear or by a brain damage.

Sitography

- ◇ <http://www.dangerousdecibels.org/virtualexhibit/2howdowehear.html>
- ◇ <https://www.britannica.com/science/ear>
- ◇ <https://it.wikipedia.org/wiki/Orecchio>
- ◇ <https://www.youtube.com/watch?v=qgdqp-oPb1Q>
- ◇ https://en.wikipedia.org/wiki/Fletcher%E2%80%93Munson_curves